



Vogue Ninja Carbon Fibre Seat Walker

Carbon Fibre Frame Extremely lightweight to maximise portability

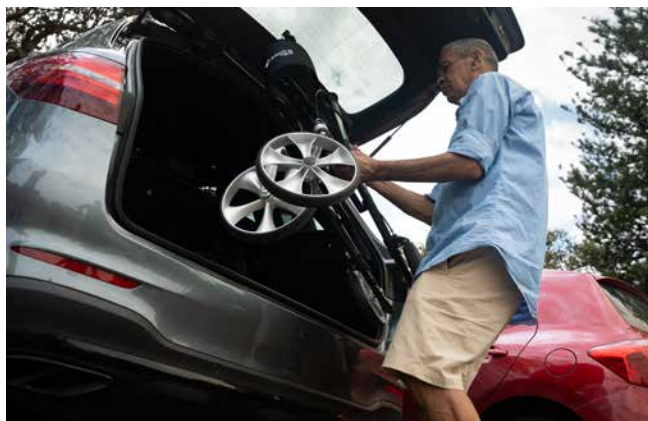
The Aspire Vogue Ninja is a lightweight seat walker designed for everyday use. Made from carbon fibre, it's easy to lift in and out of a car and has large front wheels for greater mobility outdoors.

Less Than
6kg
13lbs



Compact Wheelbase

Rear wheels are positioned for maximum clearance during entry and exit from the frame



Easy Folding

The walker folds easily for convenient transport and compact storage



5 YEAR WARRANTY
Frame

1 YEAR WARRANTY
Components



Australia
1300 133 120 | aspirecare.com.au

United Kingdom
01622 541235 | aidacare.co.uk



Great Outdoors

The large 10" wheels provide stability and smooth movement across a variety of terrains



Adjustable Handles

Allows for personalised positioning, helping to maintain proper posture



Soft-touch Brakes

Lock the rear wheels to enhance safety and stability during use



Utility Zip Bag

Holds up to 5kg, offering convenient and secure storage for personal items



Ergonomic Handles

These offer a comfortable grip during extended use. The flat-top design provides a stable resting place for arms while seated



Accessories

With a cane holder included as standard, choose from our range of optional accessories

Size Code	Overall Length mm / "	Overall Width mm / "	Overall Height mm / "	Seat Width mm / "	Seat Height mm / "	Folded Width mm / "	Wheel Size Front & Rear mm / "	Minimum Functional Weight mm / "	Typical Functional Weight* kg / lbs
Medium WAF705380	710	625	860 - 945	460	540	245	250 & 200	5.4	6.35
	28	24.5	34 - 37	18	21	9.6	10 & 8	12	14
Tall WAF705390	710	625	860 - 1025	460	620	245	250 & 200	5.5	6.4
	28	24.5	34 - 37	18	24.4	9.6	10 & 8	12	14

AS/NZ Approved | Vogue is registered in the ARTG, AUST R ARTG 271255 | *Includes accessories, bag, and backstrap.

Australia
1300 133 120 | aspirecare.com.au

United Kingdom
01622 541235 | aidacare.co.uk